

Highlands Ranch Open Space Conservation Area

Map 4 Soil Resources

Legend

- Roads
- - - Intermittent Drainage Ways
- 20ft Contours
- Highlands Ranch Open Space Conservation Area (OSCA)

Soil Survey

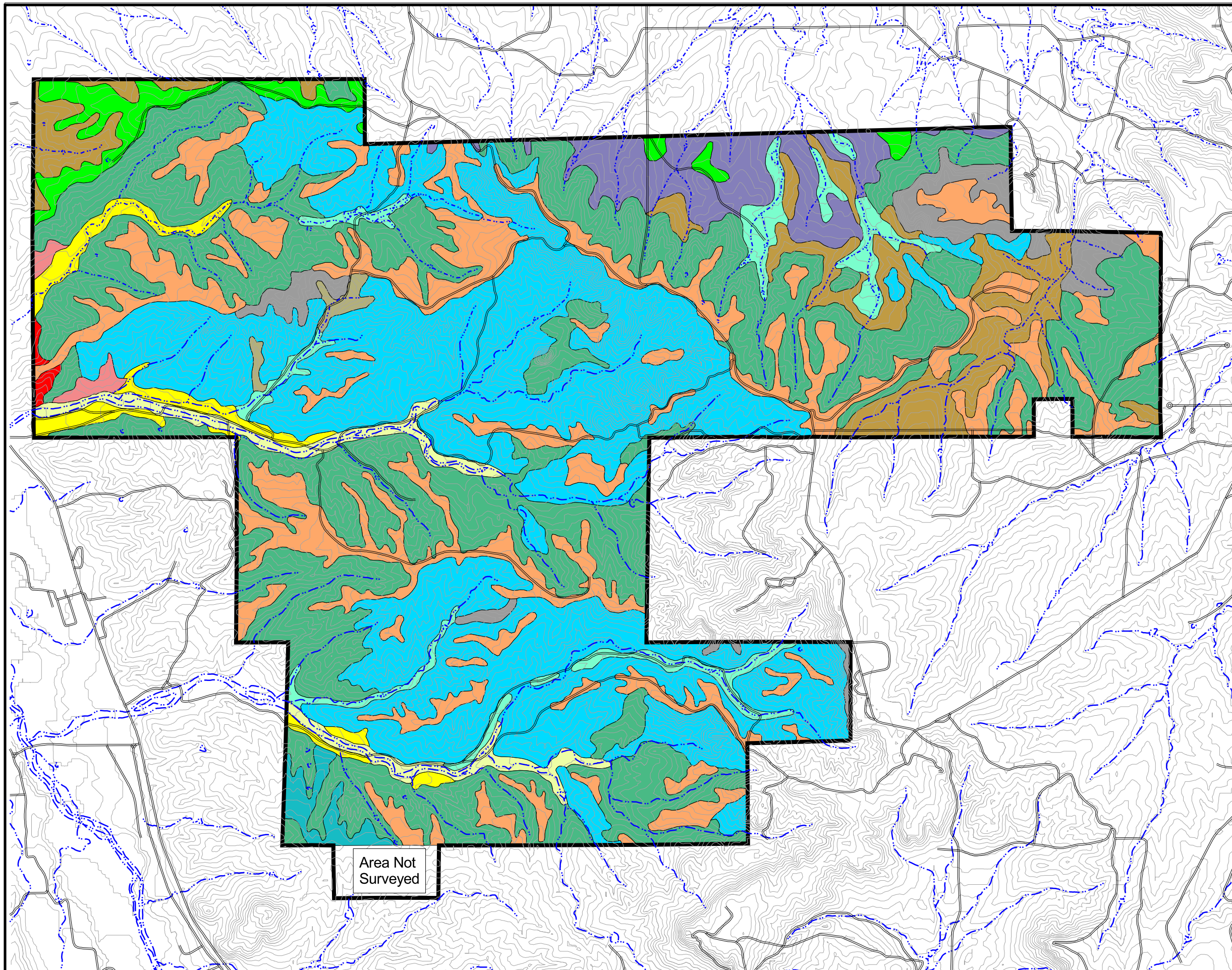
- Denver-Kutch-Urban Land Complex, 5-9% Slopes
- Haverson Loam, 0-3% Slopes
- Haverson Loam, 3-9% Slopes
- Leyden-Nunn - Rooney Complex, 9-30% Slopes
- Leyden-Standley-Primen Cobbly Clay Loams, 9-15% Slopes
- Manzanola-Renohill-Stoneham Complex, 9-15% Slopes
- Nunn Clay Loam, 5-9% Slopes
- Nunn-Urban Land Complex, 0-2% Slopes
- Paymaster Sandy Loam, 0-3% Slopes
- Platner Loam, 3-5% Slopes
- Renohill-Manzanola Clay Loams, 9-15% Slopes
- Rooney-Primen-Leyden Complex, 15-50% Slopes
- Rooney-Rock Outcrop Complex, 50-70% Slopes
- Torrifluvents, Very Gravelly, 0-3% Slopes



Science Applications International Corporation
Hellmund Associates

Base Map Source: USGS 7.5 Minute Quads
Highlands Ranch, Sedalia, 1965, Revised 1994.
Soil Survey Source: U.S. Department of
Agriculture Soil Conservation Service, 1980

M:/OSCA/Projects/Highlands.apr
Printed - 05/21/02



Area Not
Surveyed