

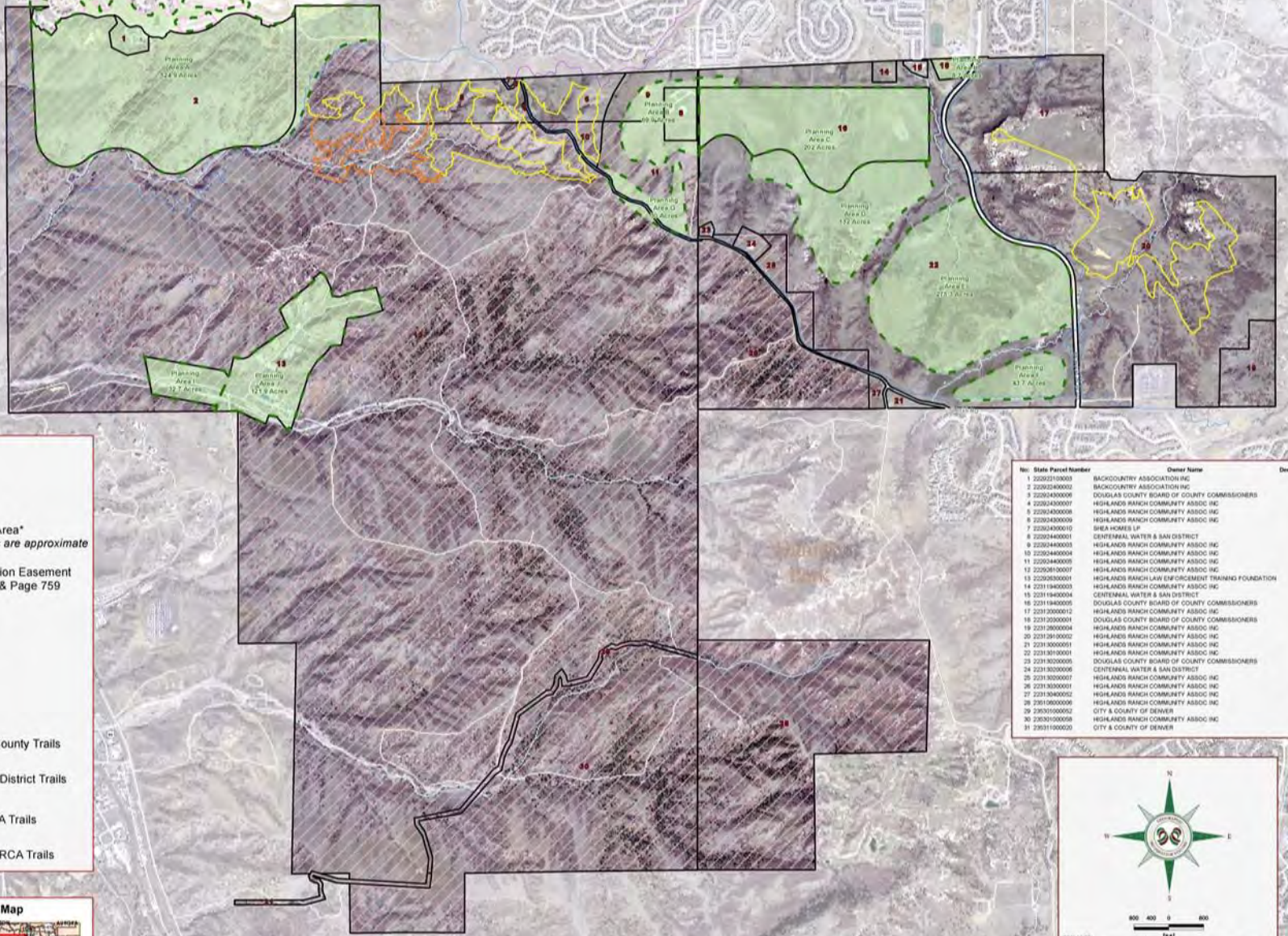


HIGHLANDS RANCH COMMUNITY ASSOCIATION

**B A C K C O U N T R Y**

**W I L D E R N E S S A R E A**





**Legend**

- Parcels
- Planning Area\*  
\*Acreages are approximate
- Conservation Easement  
Book 338 & Page 759
- Streams
- Roads
- Trails**
  - Douglas County Trails
  - HR Metro District Trails
  - New HRCA Trails
  - Existing HRCA Trails

No.	State Parcel Number	Owner Name	Deeded Acres
1	2202210003	BACKCOUNTRY ASSOCIATION INC	12.1
2	2202240002	BACKCOUNTRY ASSOCIATION INC	388.4
3	22020400008	DOUGLAS COUNTY BOARD OF COUNTY COMMISSIONERS	7.8
4	22020400007	HIGHLANDS RANCH COMMUNITY ASSOC INC	0.3
5	22020400008	HIGHLANDS RANCH COMMUNITY ASSOC INC	11.9
6	22020400009	HIGHLANDS RANCH COMMUNITY ASSOC INC	47.1
7	22020400010	SHEA HOMES LP	20.7
8	22020400011	CENTENNIAL WATER & SAN DISTRICT	38.3
9	22020400013	HIGHLANDS RANCH COMMUNITY ASSOC INC	18.2
10	22020400014	HIGHLANDS RANCH COMMUNITY ASSOC INC	38.1
11	22020400015	HIGHLANDS RANCH COMMUNITY ASSOC INC	38.1
12	22020400017	HIGHLANDS RANCH COMMUNITY ASSOC INC	4214.3
13	22020300001	HIGHLANDS RANCH LAW ENFORCEMENT TRAINING FOUNDATION	154.7
14	22011840003	HIGHLANDS RANCH COMMUNITY ASSOC INC	6
15	22011840004	CENTENNIAL WATER & SAN DISTRICT	3.6
16	22011840005	DOUGLAS COUNTY BOARD OF COUNTY COMMISSIONERS	302
17	22012000012	HIGHLANDS RANCH COMMUNITY ASSOC INC	196.6
18	22012000011	DOUGLAS COUNTY BOARD OF COUNTY COMMISSIONERS	9.9
19	22012000014	HIGHLANDS RANCH COMMUNITY ASSOC INC	90
20	22012010002	HIGHLANDS RANCH COMMUNITY ASSOC INC	584.3
21	22013000001	HIGHLANDS RANCH COMMUNITY ASSOC INC	5.6
22	22013010001	HIGHLANDS RANCH COMMUNITY ASSOC INC	207.8
23	22013020006	DOUGLAS COUNTY BOARD OF COUNTY COMMISSIONERS	2
24	22013020006	CENTENNIAL WATER & SAN DISTRICT	8.5
25	22013020007	HIGHLANDS RANCH COMMUNITY ASSOC INC	14.3
26	22013030001	HIGHLANDS RANCH COMMUNITY ASSOC INC	238.1
27	22013040002	HIGHLANDS RANCH COMMUNITY ASSOC INC	1.8
28	22013050006	HIGHLANDS RANCH COMMUNITY ASSOC INC	400.0
29	22030100002	CITY & COUNTY OF DENVER	25.2
30	22030100008	HIGHLANDS RANCH COMMUNITY ASSOC INC	574.4
31	22030100020	CITY & COUNTY OF DENVER	6.7



## Highlands Ranch Backcountry

### Douglas County, Colorado

**DISCLAIMER:**  
 All data and information provided herein are for informational purposes only. Although such Products are believed to be accurate at the time of printing, Douglas County does not warrant that such Products are error free. Douglas County, its employees, contractors or any of their agents or representatives shall not be liable for any errors, omissions, or inaccuracies in the data or information provided herein, whether such errors, omissions, or inaccuracies are caused by the negligence of any person or entity, including Douglas County, its employees, contractors or any of their agents or representatives, or by any other cause. Douglas County, its employees, contractors or any of their agents or representatives shall not be liable for any damages, including consequential damages, arising out of the use of such Products, or the inability to use such Products for any reason whatsoever. The user assumes all responsibility and agrees that the use of such Products is at the user's sole risk.

General questions about this or any other Douglas County GIS products, including maps, webpages, or other information should be directed to the Douglas County GIS Services Department at (303) 440-7414.  
 Douglas County GIS Services  
 1000 E. Main Street, 3rd Floor  
 Littleton, Colorado 80120



# Rules and Regs: E-Bikes

- To operate any motorized vehicle on or off of the trail, including but not limited to gas, battery, and electric powered motors. Except electric assisted bicycles, or E-Bikes “Class 1, and Class 2 as defined by Colorado Revised Statute, 42-1-102. Generally two or three wheeled bicycles with operable pedals and an electric motor not exceeding 750 watts of power and whose motor ceases to provide assistance when the bicycle reaches a speed of 20 mph. Also excepted are emergency, maintenance, and patrol vehicles; as well as such devices used by disabled persons. Devices used by disabled persons as Other Power Driven Mobility Devices (OPDMD) must not weigh more than 200 lbs, may not exceed a maximum speed of 20 mph, and may not be liquid fueled; unless written permission form the HRCAs is obtained.
- The exception regarding Electric Assisted Bicycles, or E-Bikes is a trial period that expires March 31, 2019.



# Can I tell the difference?

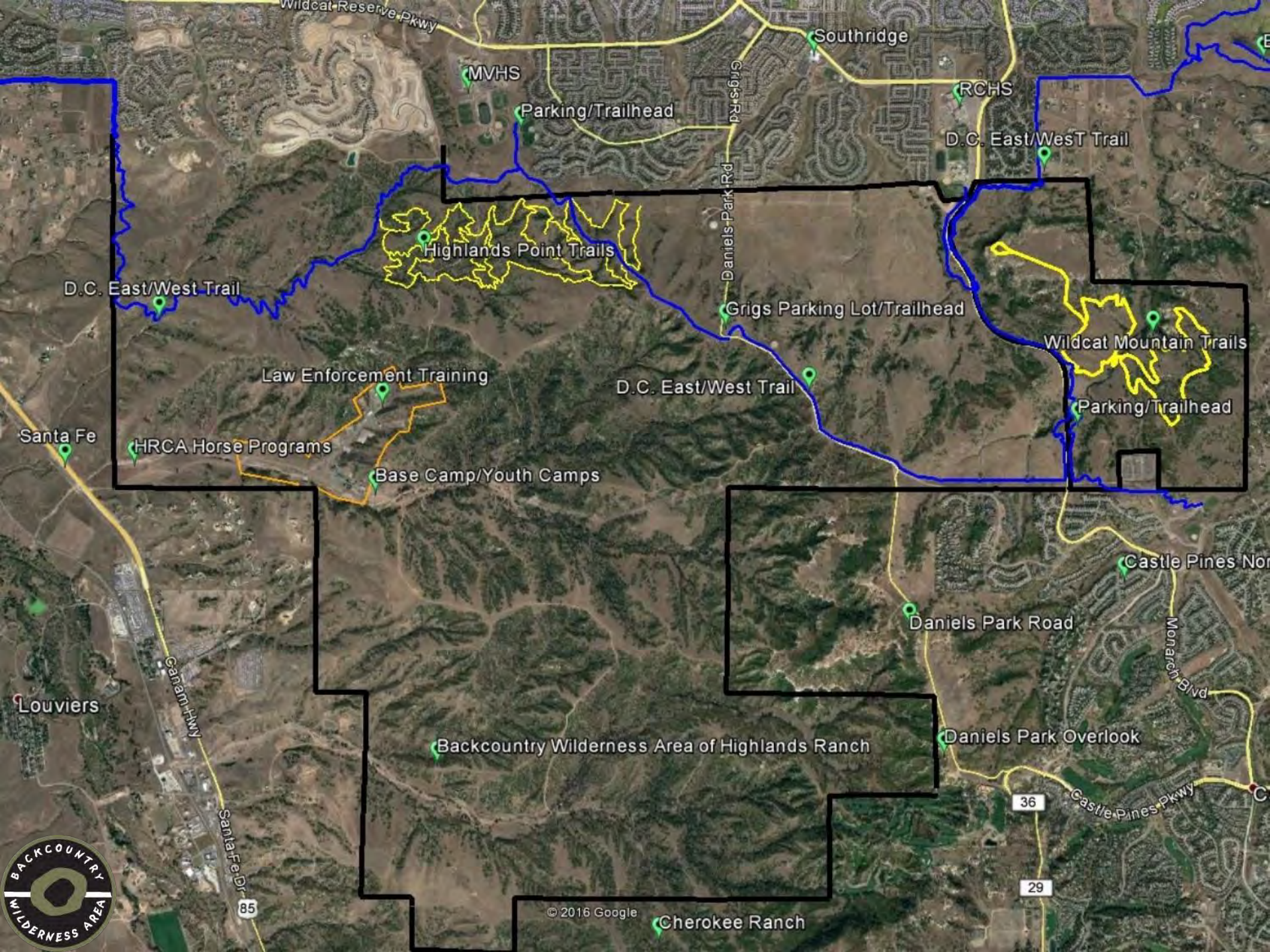
NOT REALLY



# E-Bikes

- June; trial period until March 31<sup>st</sup>
- Zero negative feedback
- Have talked to a few who own/enjoy e-bikes
- Jefferson County: Class 1 allowed anywhere
- HR Metro: Class 1 and 2 on all trails
- Douglas County: No Decision yet; likely 1 and 2
- Insurance: No issues with 1 and 2
- Recommendation: Allow 1 and 2





D.C. East/West Trail

Highlands Point Trails

Grigs Parking Lot/Trailhead

Wildcat Mountain Trails

Law Enforcement Training

D.C. East/West Trail

Parking/Trailhead

HRCA Horse Programs

Base Camp/Youth Camps

Santa Fe

Louviers

Backcountry Wilderness Area of Highlands Ranch

Daniels Park Road

Daniels Park Overlook

Castle Pines North

Cherokee Ranch



© 2016 Google



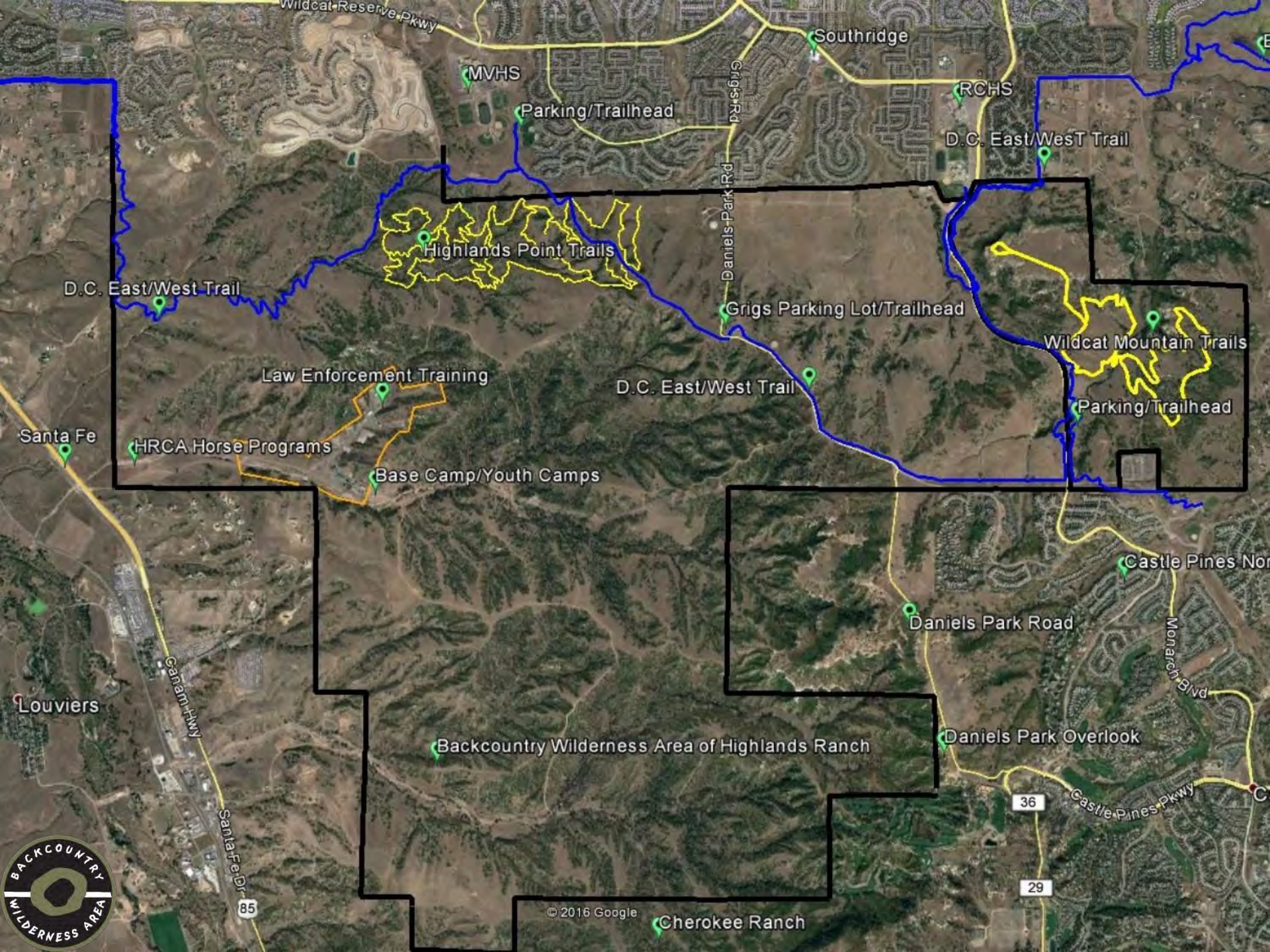
# Verizon Tower

- Easement language is set
- Verizon is in process with D.C.
- 2<sup>nd</sup>-3<sup>rd</sup> quarter construction









Southridge

MVHS

Parking/Trailhead

RCHS

D.C. East/West Trail

Highlands Point Trails

D.C. East/West Trail

Grigs Parking Lot/Trailhead

Wildcat Mountain Trails

Law Enforcement Training

D.C. East/West Trail

Parking/Trailhead

Santa Fe

HRCA Horse Programs

Base Camp/Youth Camps

Castle Pines North

Daniels Park Road

Louviers

Backcountry Wilderness Area of Highlands Ranch

Daniels Park Overlook



© 2016 Google

Cherokee Ranch

36

29

85



Temporary Easement Area (Pulling Site)

20' PSDO EASEMENT REC #2200600968

PARCEL AREA 146,258 S.F. OR 3.358 ACRES

30' PSDO EASEMENT REC #2200600968

20' PSDO EASEMENT REC #2200600968

OWNER: PUBLIC SERVICE CO OF COLORADO BOOK 167 PAGE 251 (DANIELS PARK SUBSTATION)

EXISTING OVERHEAD LINE (TYP.)

SECTION (TYP.)

Temporary Easement Area (Staging) 5.68 acres

5M COR. SEC. 28 T6S. 167W. 6TH P.M. FOUND 3.25' ALUM. CAP U.S. 42577E

Temporary Easement Area (Access) 0.25 acres

PUBLIC SERVICE CO OF COLORADO EASEMENT BK 150 PG 112

FOUND TO CAP IN CO PUBLIC S ENG DEPT ROW

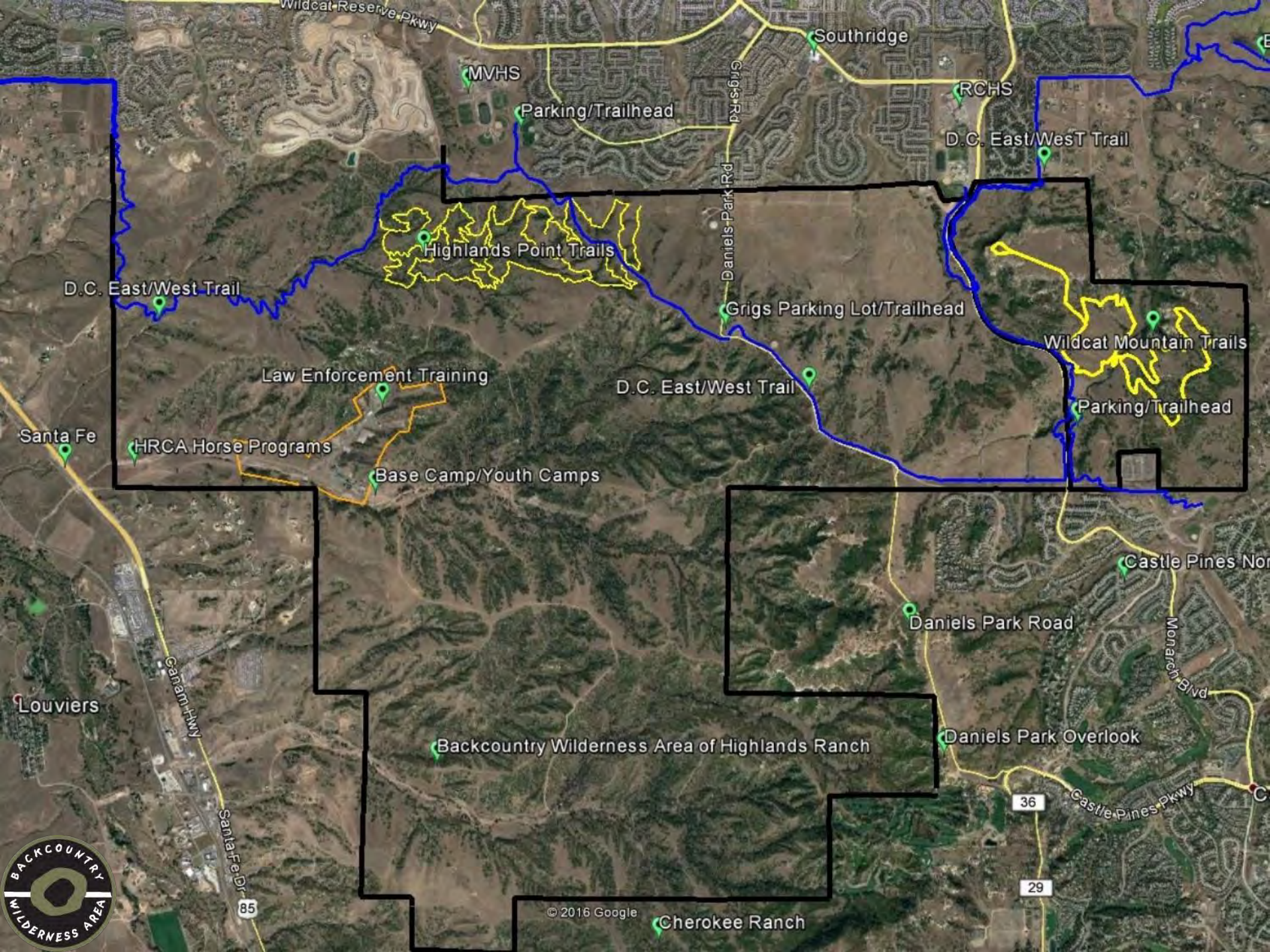


5' CORNER MONUMENT PLACED BY CO ROW



Sean Robert Barrett  
An Unfinished Life  
A Bright Star on the Horizon





D.C. East/West Trail

Highlands Point Trails

Grigs Parking Lot/Trailhead

Wildcat Mountain Trails

Law Enforcement Training

D.C. East/West Trail

Parking/Trailhead

HRCA Horse Programs

Base Camp/Youth Camps

Santa Fe

Louviers

Backcountry Wilderness Area of Highlands Ranch

Daniels Park Road

Daniels Park Overlook

Castle Pines North

Cherokee Ranch



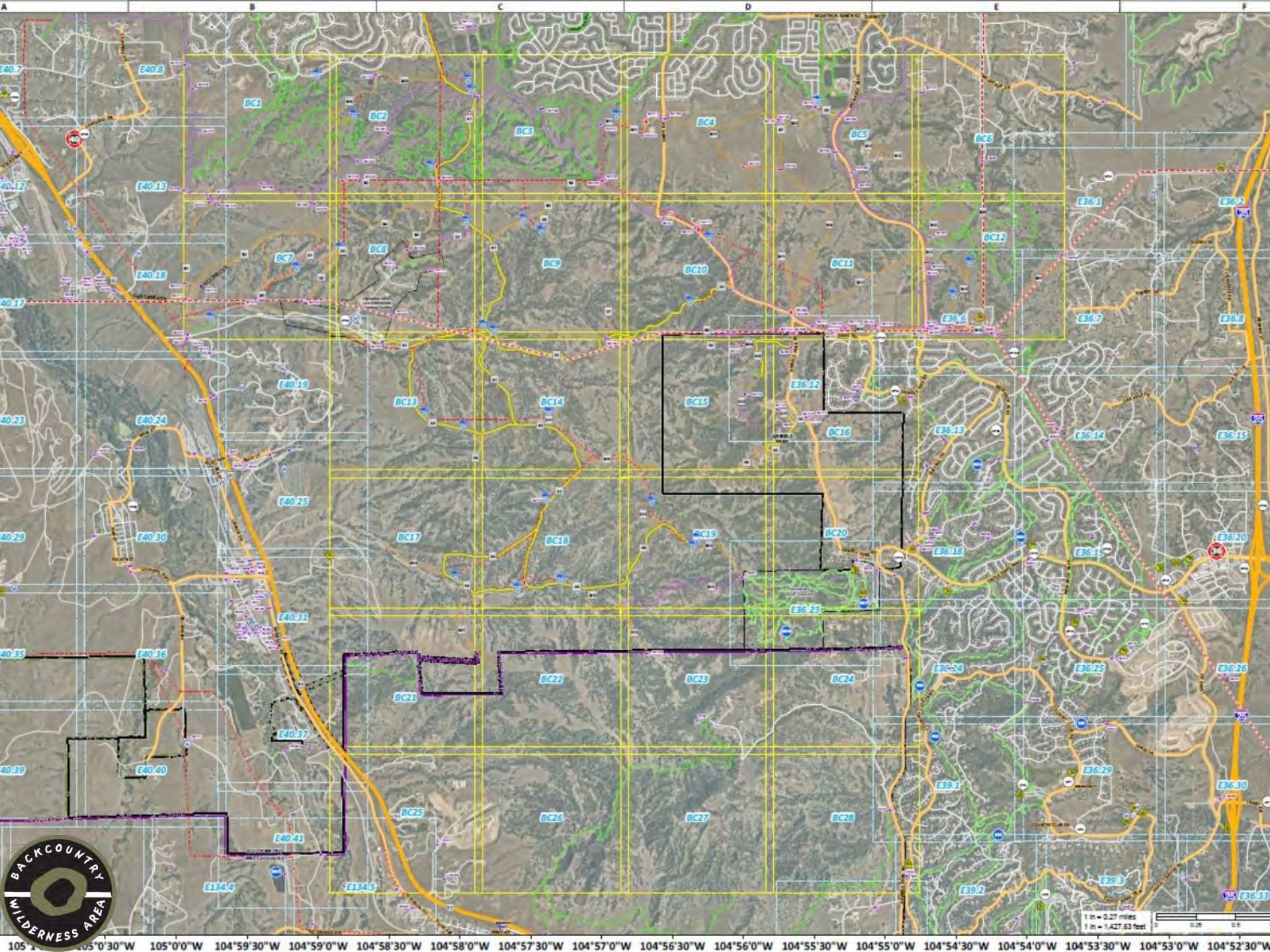
© 2016 Google











1 in = 0.27 miles  
1 in = 1,427.63 feet

105°00'00"W 105°00'30"W 104°59'30"W 104°59'00"W 104°58'30"W 104°58'00"W 104°57'30"W 104°57'00"W 104°56'30"W 104°56'00"W 104°55'30"W 104°55'00"W 104°54'30"W 104°54'00"W 104°53'30"W 104°53'00"W 104°52'30"W

# Tactical Map BC14

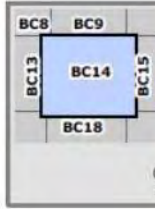
1:5,810

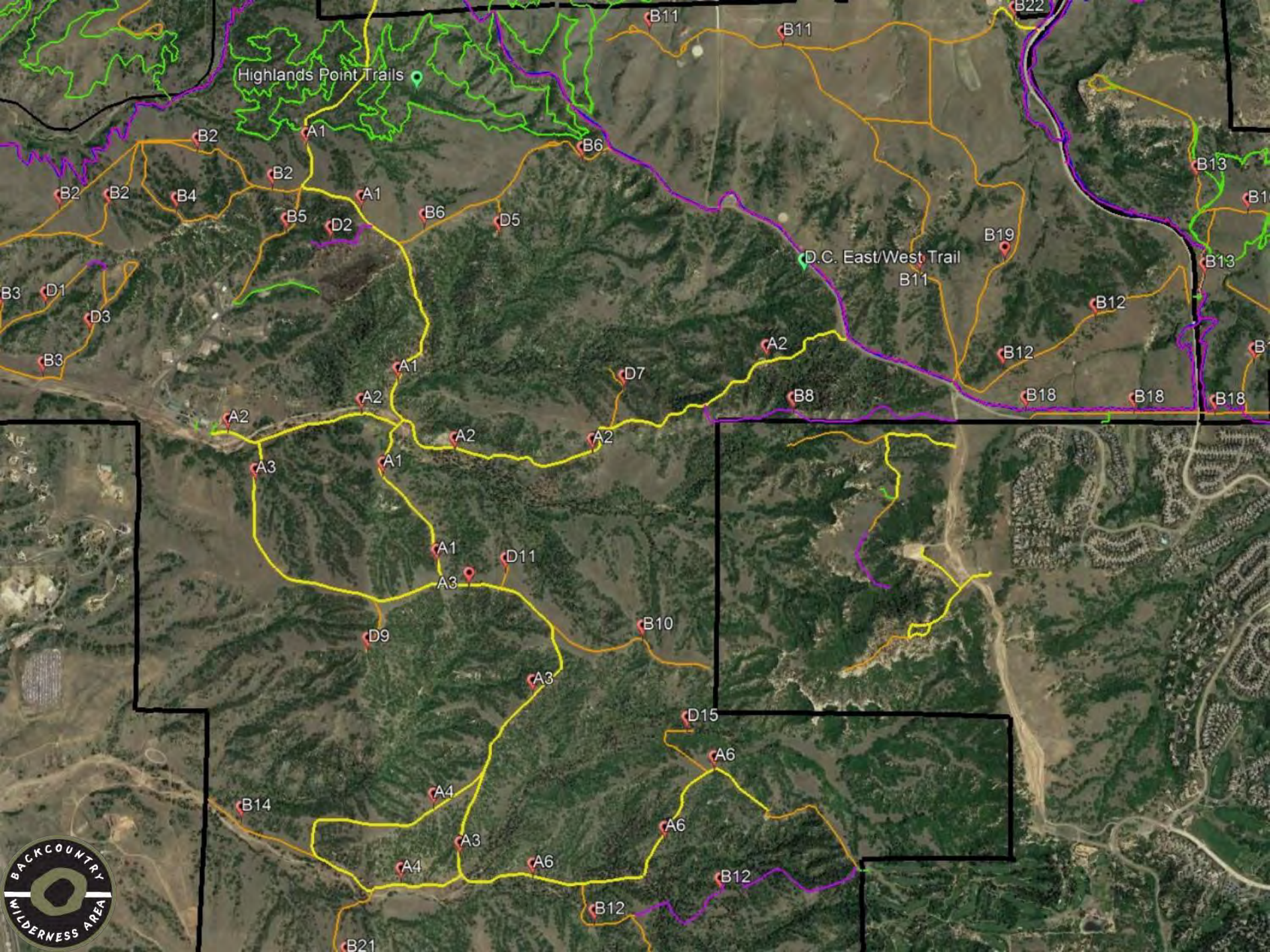
- IMPROVED ROAD
- UNIMPROVED
- DC TRAIL
- ATV ONLY
- FOOT TRAIL

- Fire Station
- Hydrant
- Target/Known Hazard
- Dip Site



104°57'40"W 104°57'30"W 104°57'20"W 104°57'10"W 104°57'0"W 104°56'50"W





Highlands Point Trails

D.C. East/West Trail





WELCOME TO THE  
BACKCOUNTRY OUTDOOR CENTER  
ARCHERY, HORSE CORRALS, & BASE CAMP

NO TRAILHEAD OR TRAIL ACCESS,  
PROGRAMS ONLY.



HIGHLANDS RANCH  
LAW ENFORCEMENT FACILITY





10310  
**United**  
1-800-TOILETS

TUFF BUILT









1/10/2019 12:16:48.287





1/10/2019 12:44:38.970

A video player control bar with a timestamp of 1/10/2019 12:44:38.970 and various playback controls such as play, stop, and navigation buttons.

# 2018 SUMMARY



# Camp Backcountry



# CAMP NUMBERS

- 2018:
  - 815 Total Campers
  - \$195,000 Revenue
- 2015, 16, 17
  - 108, 480, 670
  - \$70,000, \$120,000, \$165,000





# HORSE

- 2018
  - \$117,000
- 2015, 16, 17
  - \$73,000, \$73,000, \$106,00





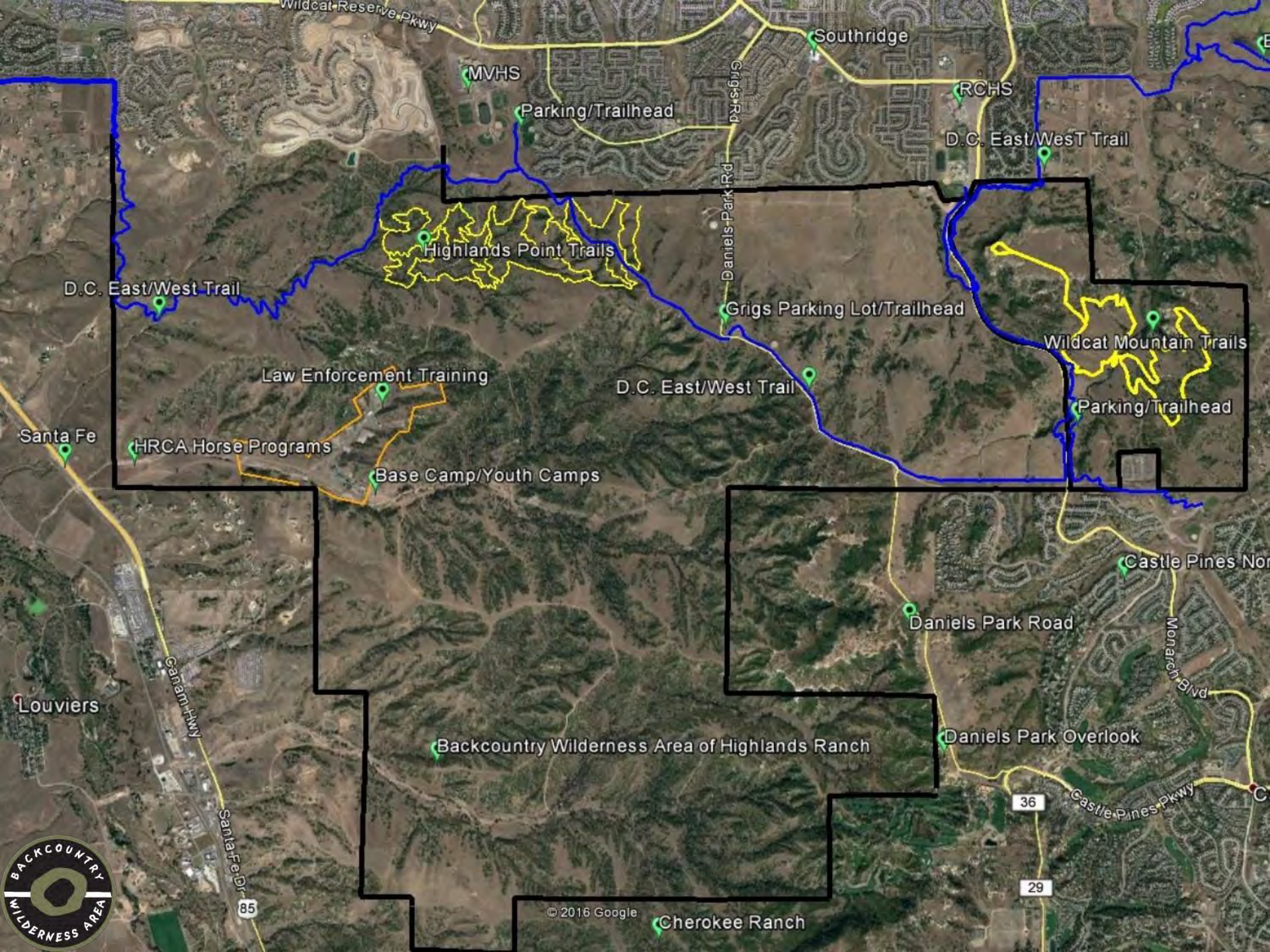
# PARTICIPANTS

- Archery: 8,000\*
- Events: 2,200
- Horse: 1500
- Camps: 815
- Field Trips: 500
- Family: 200
- Birthdays: 200
- Preschool: 150
- Trails: 150,444
- Volunteers: 500
- GRAND TOTAL:  
– 163,934



# ARCHERY





Wildcat Reserve Pkwy

Southridge

MVHS

Parking/Trailhead

RCHS

D.C. East/West Trail

Highlands Point Trails

Grigs Parking Lot/Trailhead

Wildcat Mountain Trails

D.C. East/West Trail

Law Enforcement Training

D.C. East/West Trail

Parking/Trailhead

Santa Fe

HRCA Horse Programs

Base Camp/Youth Camps

Castle Pines Nor

Louviers

Canam Hwy

Daniels Park Road

Monarch Blvd

Backcountry Wilderness Area of Highlands Ranch

Daniels Park Overlook

Santa Fe Dr

85

36

29

Castle Pines Pkwy

© 2016 Google

Cherokee Ranch











### 3D Layout

Write a description for your map





# ARCHERY NUMBERS

- Opened in June
- 8,000 participants\*
- \$41,000 day and season pass revenue
- Prior years: \$12,000 revenue
- Amazing Reviews and Feedback



# VOLUNTEERS

- 500 People
- 2,774 HOURS  
– 1,000 more than 2017
- \$67,000 VALUE



# HUNTING



# 501c3 – Conservation and Education Fund

» \$20,000 net revenue



46 °F 7 °C

07-05-2017 06:11:14

# EVENTS AND DONATIONS

- BBQ
- Elk Banquet
- Gear Swap
- Shindig
- Haunted Forest



# DONATIONS

- 20/20 Campaign
- Kickoff is Jan. 31<sup>st</sup> at Living The Dream



44°F 6°C ●

11-06-2018 12:14:35



# NATURAL RESOURCES



8/3/2017 7:42 PM



# NATURAL RESOURCE FUNDING

- 2011: \$9,000
- 2017: \$30,000
- 2018: \$67,000



62°F 16 °C ●

10-13-2018 13:15:36















**CAT** 299D2  
XHP

TWO SPEED



# Brush Clearing

- 2018: Contractor: \$29,000 for 142 hours
  - \$204/hour
- 2019 and Beyond:
  - Fuel, Maintenance, Staff, Annual Cost of Machine
    - \$36,000 for 350 hours = \$103/hour
- 146% increase in hours for 24% increase in cost



# Brush Clearing Benefits

- Fuel Breaks --Roads
- Fuel reduction --Fire easier to control
- Protect from catastrophic fires
  - Years away





# Habitat Benefits

- Habitat improvement
  - More 'edge' habitat = more diversity plants and animals
  - Increase in grass/forbes (Grazers)
  - Increase in new growth (Browsers)
  - Increase in bedding areas (Herbivores)
  - Increase in new ponderosa pines
  - Increase in forage areas (turkeys)



# Don't be fooled

- Habitat/Natural Resources are most important!
- Development all around us
- Backcountry will only grow in significance, importance, and value
- It's in amazing condition
- Can always do more and do better



# Growth, Growth, Growth

- 2010: \$40,000      2 FT
- 2018: \$532,000    7 FT



# Every Year....

- 2009: HP Trails and Total Conveyance
- 2010: Hunting, Archery Range, Horses
- 2011: Elk Banquet, Haunted Forest
- 2012: Licensed Camps, Draft Horses
- 2013: 3 FT staff, 40k in growth
- 2014: New Trails, Horse Camps
- 2015: 5 FT staff, 50k in growth
- 2016: Basecamp and Moved Horses
- 2017: 7 FT staff, 501c3, 80k in growth
- 2018: New archery and 3D archery
- 2019: Goats and a Donkey!



# What Is Our Potential?

- 2019: First year to repeat
- Fully Staffed
- Focus
  - Customer service, web-site, policies/procedures, part-time staff building and training, growth of existing events and programs
- Potential
  - Camps are 80% full –can we get to 95-100%
  - 30 birthdays in 2018 –can we do 100
  - 1% of household donated to 501c3 – 20%?





# ALL OF THIS...

- For just \$12/household



AM

18:25

10/01/18

64 F



# KEEP UP

- Facebook
  - [www.Facebook.com/HRCABackcountry](http://www.Facebook.com/HRCABackcountry)
- 10 Day Outdoor Cast
- Monthly Backcountry E-News
- Tour







59 °F 15 °C ●

06-22-2017 06:52:54